

SUGGESTED ORGANIZATION OF LOCAL RESCUE SERVICE

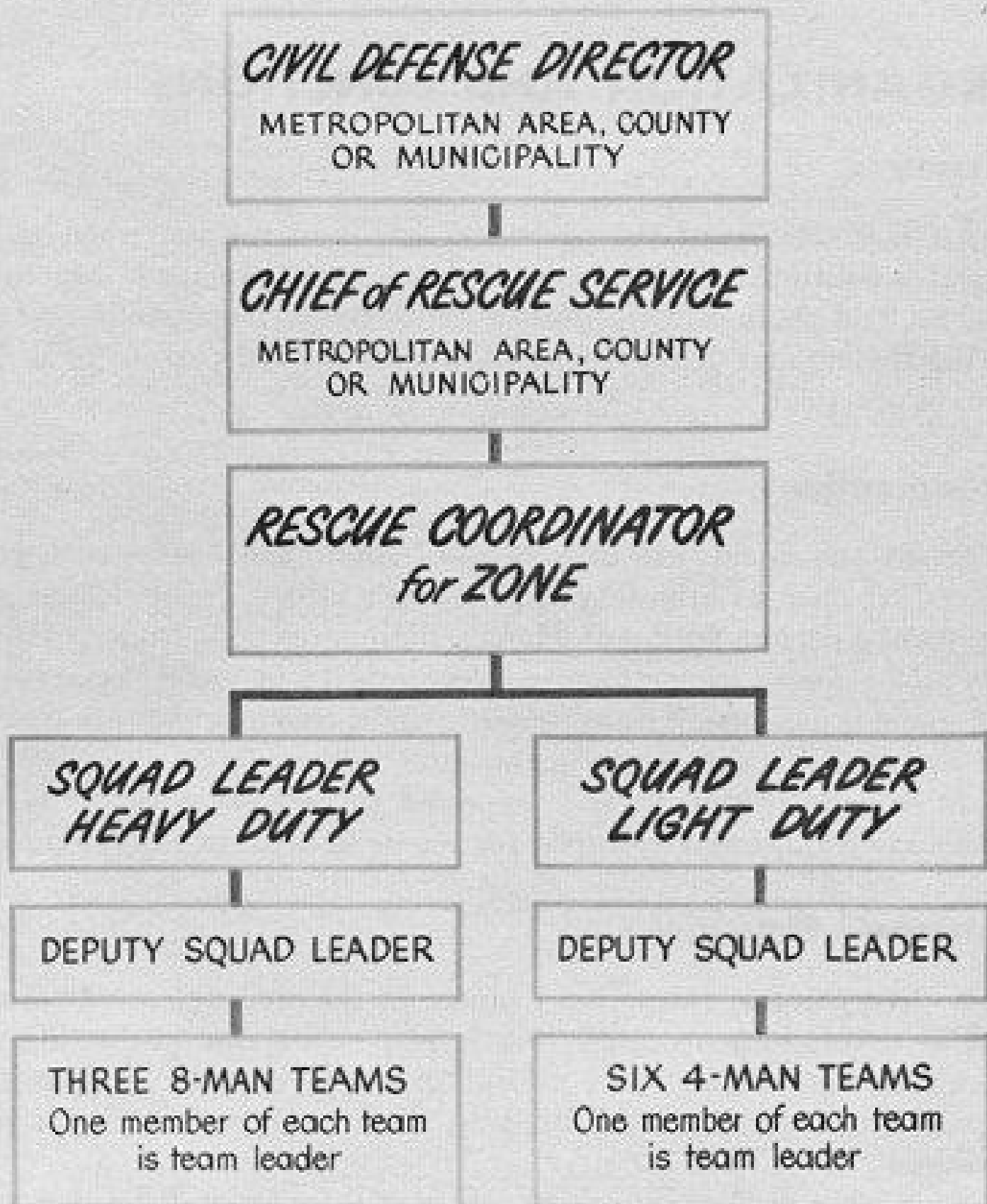


FIGURE 1.—Suggested organization of local rescue service.

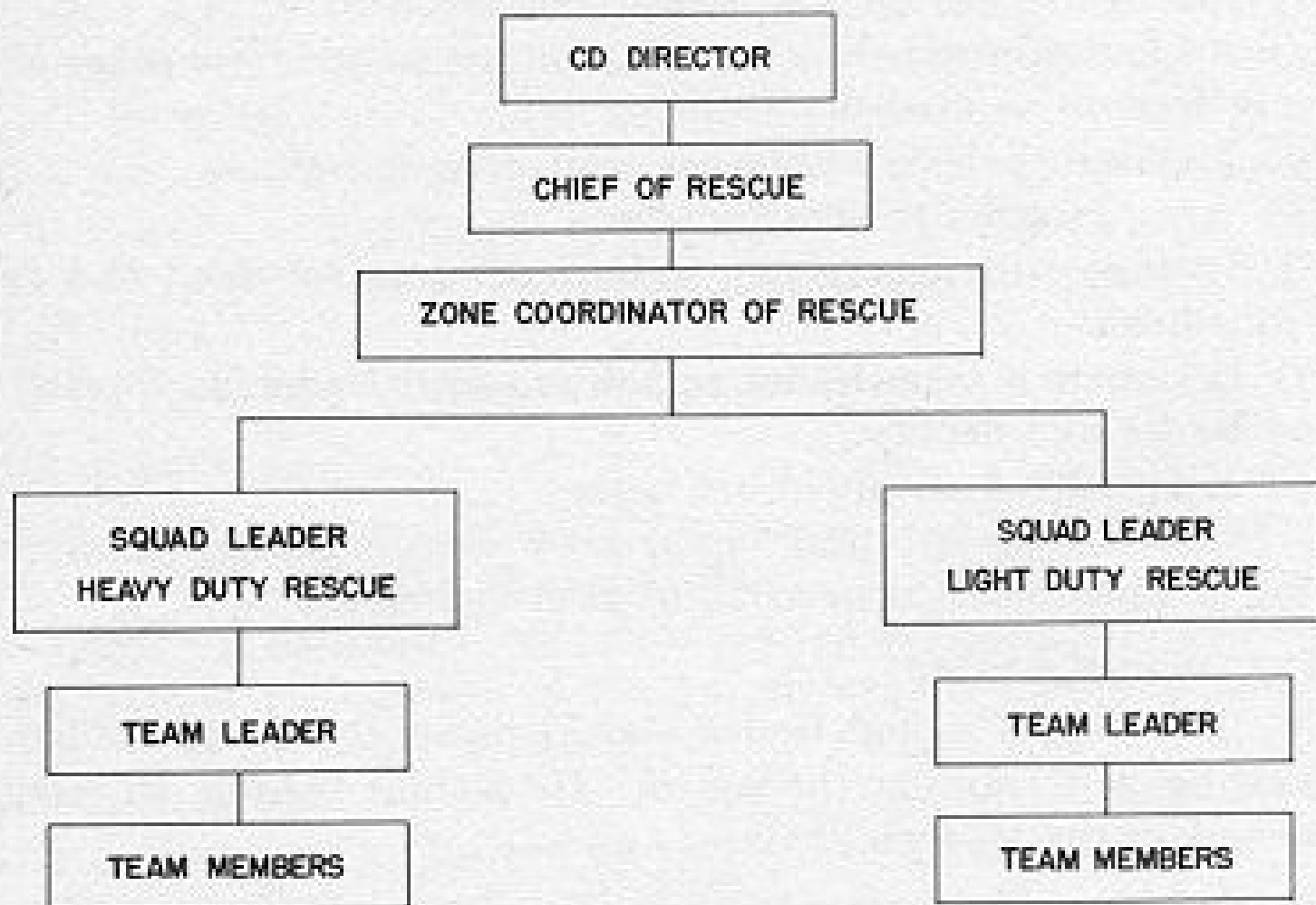


FIGURE 4.—Chain of command—staff.

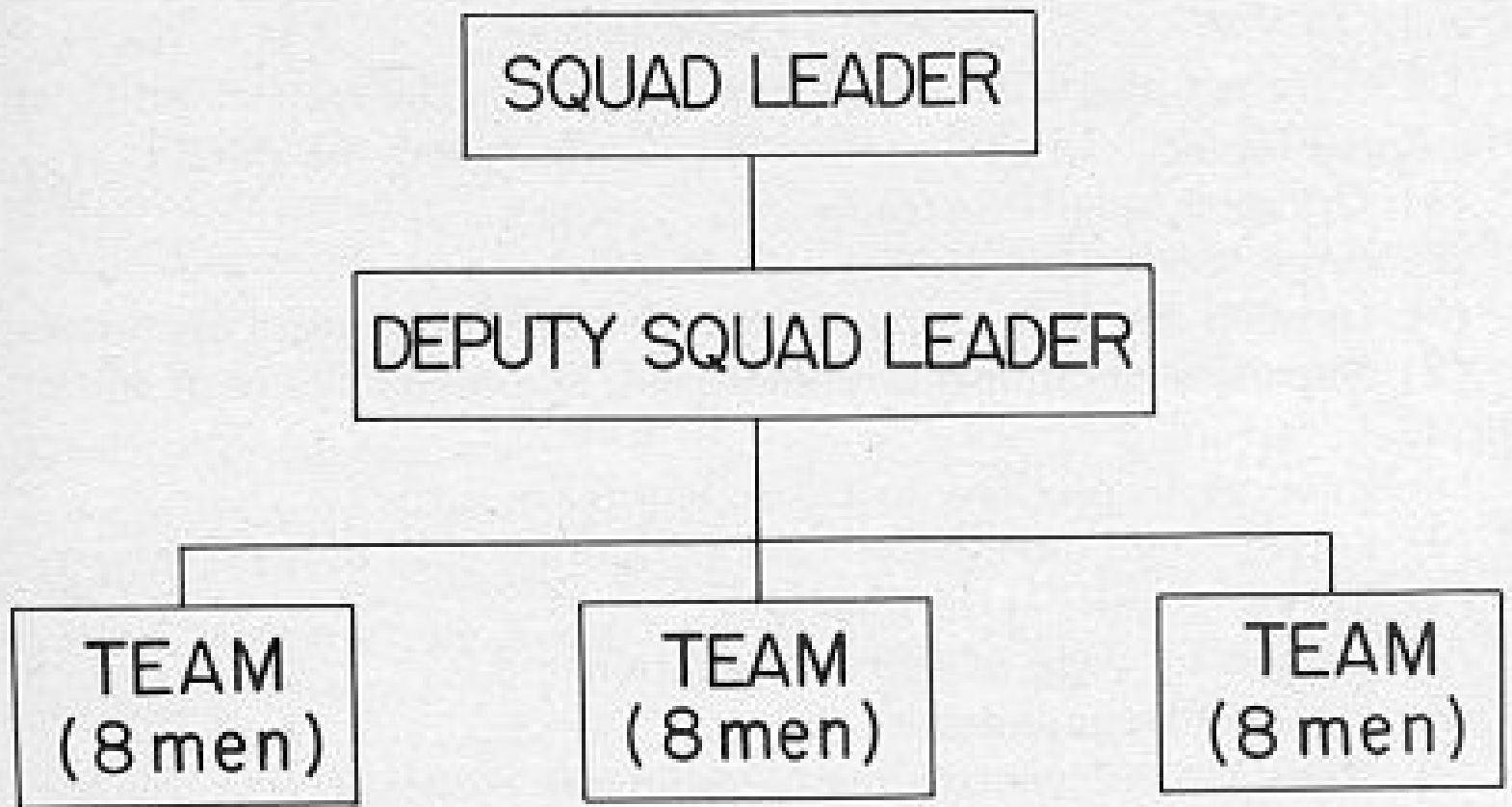


FIGURE 3.—Organization of heavy duty rescue squad.



FIGURE 7.—Heavy duty rescue truck and equipment.

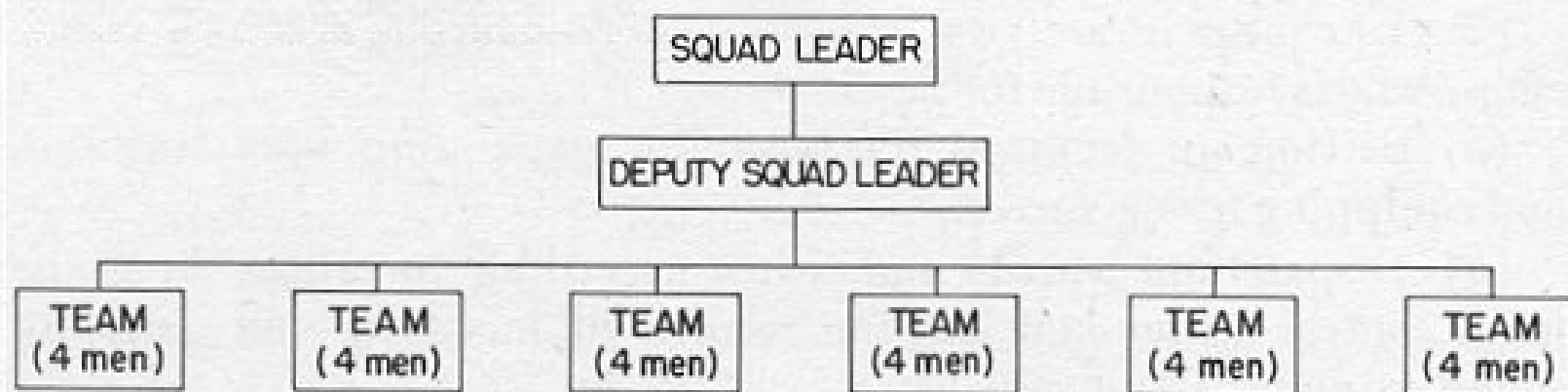


FIGURE 2.—Organization of light duty rescue squad.



FIGURE 6.—Light duty rescue truck and equipment.

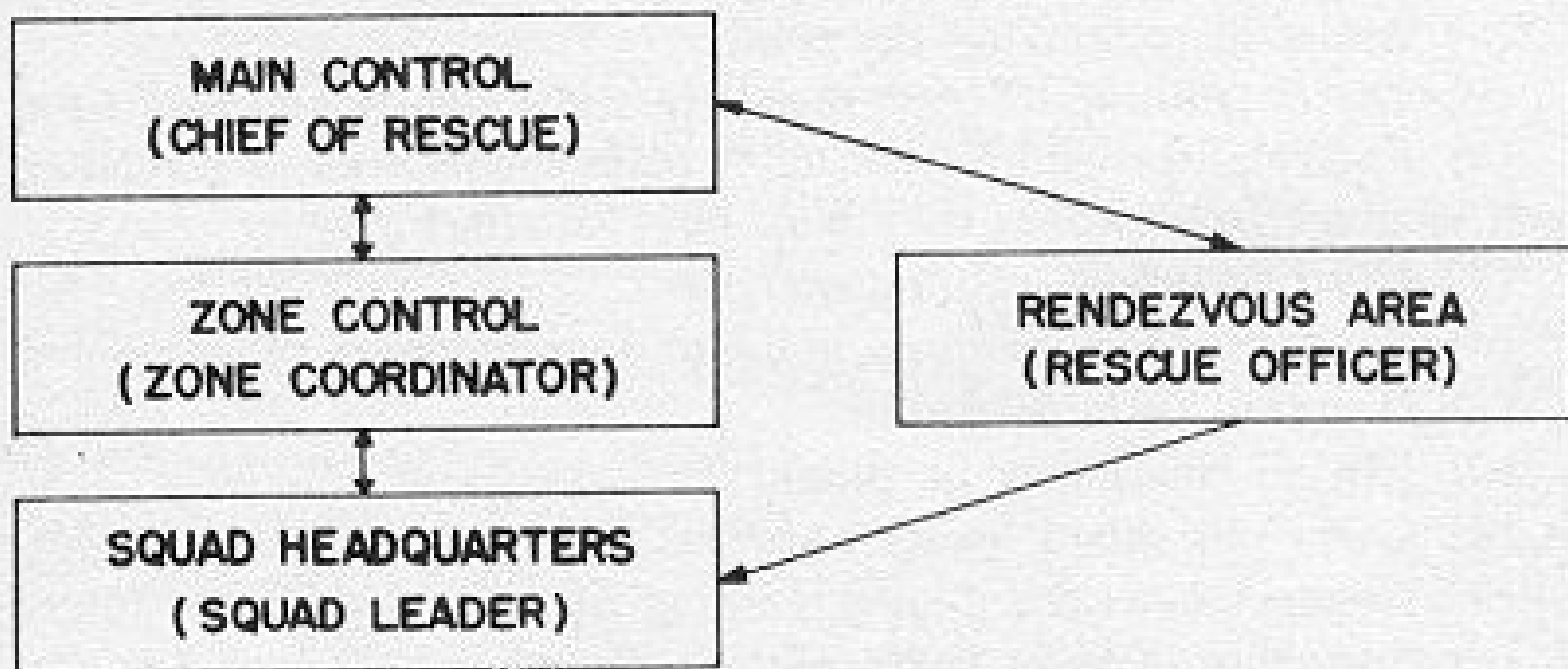


FIGURE 5.—Chain of command—operations.

EQUIPMENT

The trucks and equipment sets herewith listed are recommended for civil defense rescue organizational equipment. (Information regarding criteria for obtaining partial Federal reimbursement for the purchase of this equipment is in Federal CD Guide, November 1967, Part E, Chap. 11, App. 4, Ann. 1) Meaning of the abbreviation below: LD (light duty) gross vehicle weight of up to 10,000 lbs; MD (intermediate type) gross vehicle weight 10,000 to 20,000; HD (heavy duty) gross vehicle weight over 20,000 lbs. The total weight of rescue equipment and assigned truck personnel should not exceed the rated payload of the truck.

Trucks and Equipment Sets		Quantities		
<i>OCD No.</i>	<i>ITEM</i>	<i>LD</i>	<i>MD</i>	<i>HD</i>
LD 1	Truck w/equipment	1		
LD 2	Truck w/o equipment	1		
LD 3	Set of tools & equip. w/o truck	1		
MD 1	Truck w/equipment		1	
MD 2	Truck w/o equipment		1	
MD 3	Set of tools and equip. w/o truck		1	
HD 1	Truck w/equipment			1
HD 2	Truck w/o equipment			1
HD 3	Set of tools and equip. w/o truck			1

Equipment Items		Quantities		
RE 1	Apparatus, self-contained, breathing, with 1 reserve tank	3	4	5
RE 2	Axes, 8-lb., flat head	1	1	2
RE 3	Bars, wrecking, 36'' long	1	1	2
RE 4	Crowbars, 66''	1	2	2
RE 5	Crowbars, 84''	0	1	2
RE 6	Blankets, asbestos, protective	0	1	2

<i>OCD No.</i>	<i>Equipment Items</i> <i>ITEM</i>	<i>Quantities</i>		
		<i>LD</i>	<i>MD</i>	<i>HD</i>
RE 7	Blankets	6	8	12
RE 8	Boots, rubber, contractor type, pullover, pairs	4	6	8
RE 9	Box, tool (for hand tools)	1	1	1
RE 10	Buckets, galvanized, 14-qt. (heavy- gauge)	2	4	6
RE 11	Can, safety, gasoline, 5-gal.	1	2	2
RE 12	Chains, 10' long, 2,000-lb. cap.	1	0	0
RE 13	Chains, 10' long, 5,000-lb. cap.	0	1	1
RE 14	Container, debris, bucket type	0	2	2
RE 15	Container, water, drinking, 5-gal. cap.	1	1	1
RE 16	Coveralls, flameproof	4	6	8
RE 17	Cords, extension, 100', for floodlights, 2 twist-lock connectors (10-gauge weatherproof)	2	4	6
RE 18	Reels, for extension cords	1	2	3
RE 19	Junction box, 6 female, for 10-gauge wire, with twist-lock connectors	1	1	2
RE 20	Adapters, 110-volt, straight prongs; 2 male, 2 females, with twist-lock for 10- gauge wire	1	1	2
RE 21	Extinguisher, 2½ gal. water, nonferrous, pump type, or equiv.	1	1	2
RE 22	Gear, lifting tackle, 1½-ton cap.	0	1	1
RE 23	Gloves, heavy debris	4	6	8
RE 24	Gloves, leather, protective	1	2	2
RE 25	Gloves, rubber, insulating, 10,000 volts	1	2	2
RE 26	Goggles, dustproof, shatterproof	4	6	8
RE 27	Hammers, sledge, 4-lb.	1	1	1
RE 28	Hammers, sledge, 8-lb.	0	2	2
RE 29	Hammers, sledge, 16-lb.	0	2	2
RE 30	Helmets, safety (luminescent)	4	6	8
RE 31	Jacks, 5-ton cap.	2	2	2
RE 32	Jacks, 10-ton cap.	0	2	2
RE 33	Jacks, 20-ton cap.	0	0	2
RE 34	Kit, first aid (36-unit)	1	1	2
RE 35	Kit, first aid (sling type)	4	6	8
RE 36	Ladder, roof, 12', w/folding hooks	1	1	1

<i>OCD No.</i>	Equipment Items <i>ITEM</i>	Quantities		
		<i>LD</i>	<i>MD</i>	<i>HD</i>
RE 37	Ladder, extension, 24', 2-section	0	1	1
RE 38	Ladder, folding, 10'	1	1	1
RE 39	Lights, hand, safety-approved, battery	4	6	8
RE 40	Life gun kit (Remington or equal)	0	1	1
RE 41	Outfit, cutting, oxygen-acetylene, 2 spare oxygen tanks, 1 spare acetylene tank	0	0	1
RE 42	Pick, point, and chisel	0	1	2
RE 43	Pole, pike, 6'	1	1	1
RE 44	Pole, pike, 10'	0	1	1
RE 45	Generator, gasoline-powered, 1,500 watts (Onan 105 PC or equal)	1	0	0
RE 46	Generator, gasoline-powered, 2,500 watts (Onan 205 AJ-1P or equal)	0	1	2
RE 47	Lights, flood, portable, AC, 250 watts	2	2	4
RE 48	Lights, flood, portable, AC, 500 watts	2	4	4
RE 49	Rope, manila, 1/2" dia. (1,200', cut into the following lengths: 8—50' lengths, 4—100' lengths, 2—200' lengths)	1	1	1
RE 50	Rope, manila, 3/4" dia. (1,200', cut into the following lengths: 3—200' lengths, 2—300' lengths)	0	1	1
RE 51	Saw, chain, gasoline-powered, 24'', and extra chain	0	1	1
RE 52	Saw, crosscut, 4 1/2'' blade	0	1	1
RE 53	Sawzall kit, heavy-duty, or equivalent	0	1	1
RE 54	Saw, power, portable (K12 or equiv.) w/case & 2 wood, steel, and masonry blades	0	1	1
RE 55	Sheeting, rubber, 45'' wide, 84'' long	8	8	8
RE 56	Shovel, pointed, long-handle	1	2	2
RE 57	Shovel, square mouth, D-handle	1	2	2
RE 58	Shovel, round-mouth, tunneling, short, D-handle	0	2	2
RE 59	Stretchers, (Army folding)	4	4	4
RE 60	Stretchers, (basket type)	2	2	2
RE 61	Tackle block, wood, rope, 6'' (2-sheave) bronzebushed, with becket	0	2	4

<i>OCD No.</i>	Equipment Items <i>ITEM</i>	Quantities		
		<i>LD</i>	<i>MD</i>	<i>HD</i>
RE 62	Tackle block, wood, rope, 6'' (3-sheave) bronzebushed, with becket	0	2	4
RE 63	Tackle block, wood, rope, 6'' (snatch), bronzebushed, with becket	0	2	4
RE 64	Tackle block, wood, rope, 4'' (2-sheave) bronzebushed, with becket	2	4	8
RE 65	Snatch block, wire rope, to fit winch cable	1	1	1
RE 66	Tarpaulin, w/grommets, 12' x 14'	1	2	3
RE 67	Small hand tool kit w/hammers, screw- drivers, etc.	1	1	1
RE 68	Radiological equipment sets, per OCD Radef program criteria	1	1	1
RE 69	Radio, mobile, 2-way	1	1	1
RE 70	Resuscitator, inhalator, portable	1	1	1